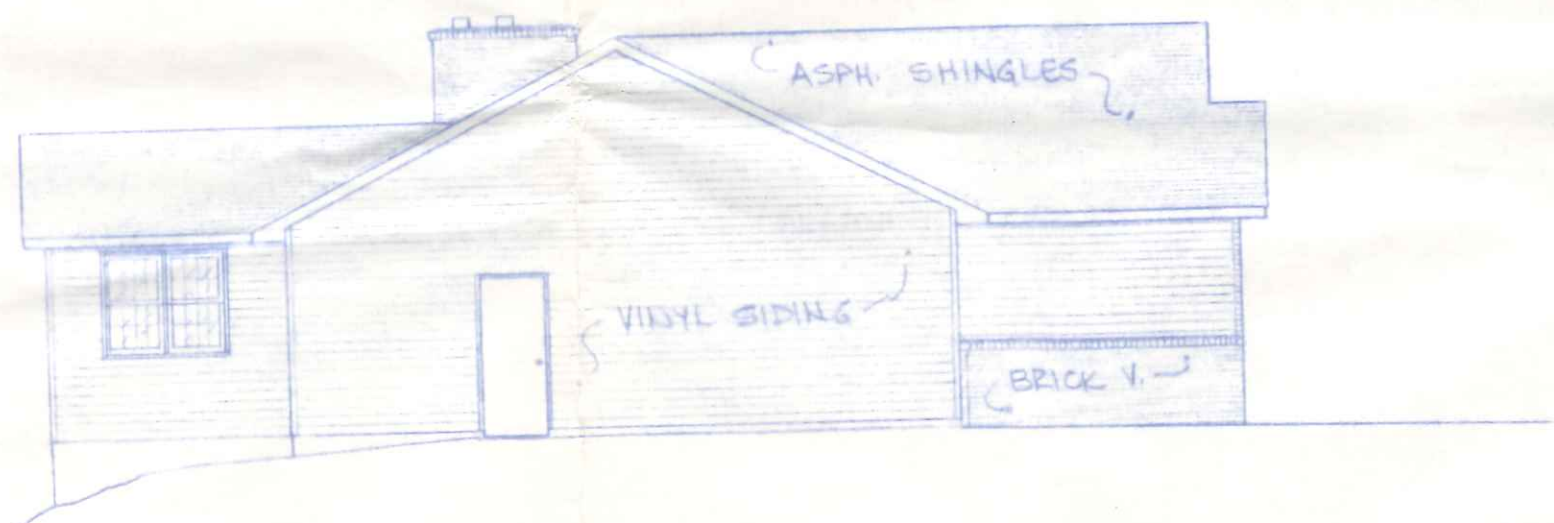
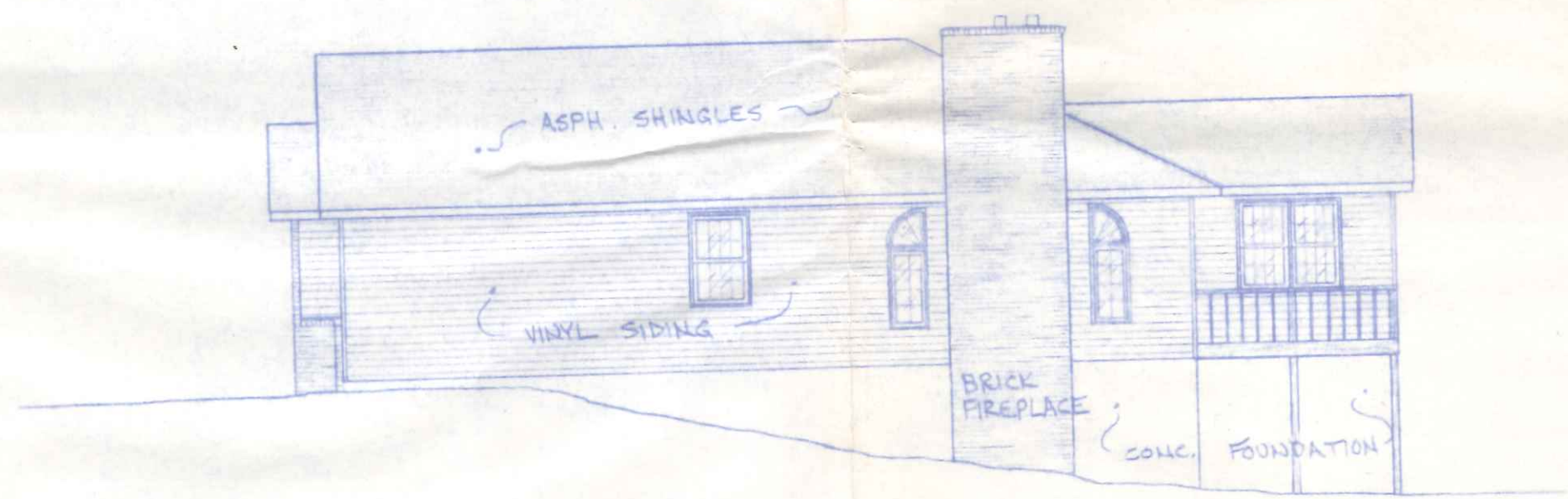


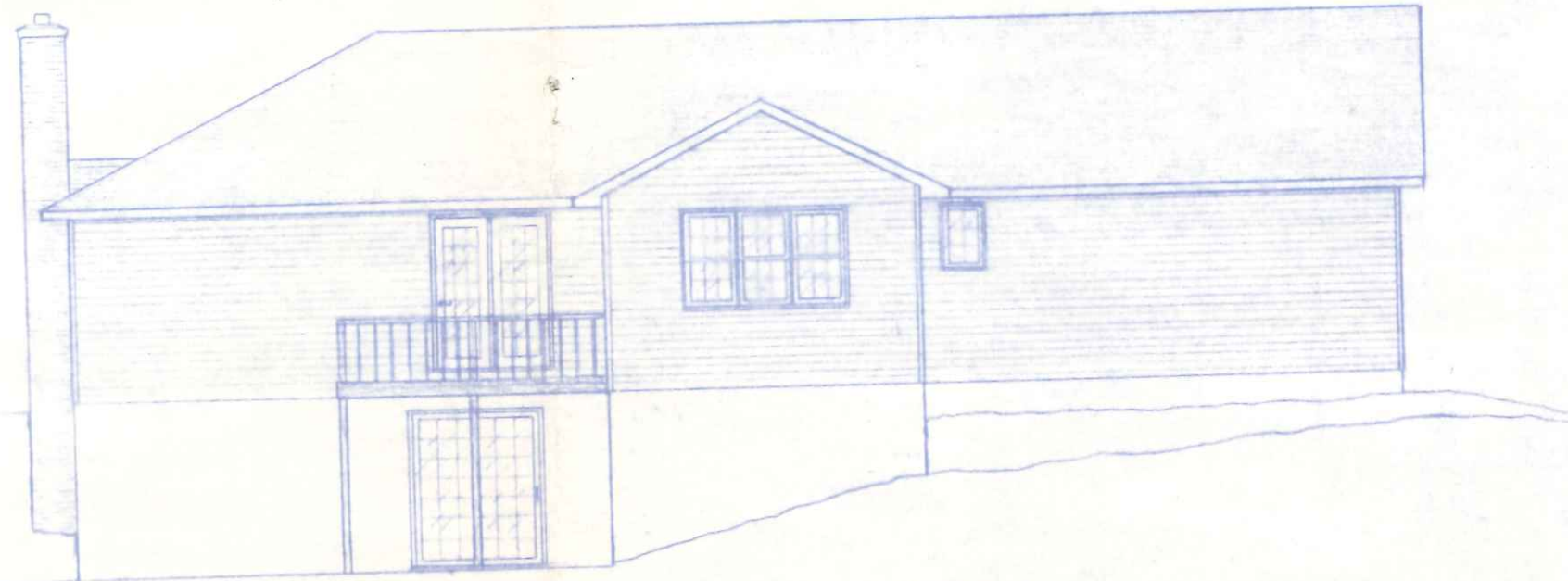
FRONT ELEVATION  
1/4" = 1'-0"



LEFT SIDE ELEVATION  
1/8" = 1'-0"

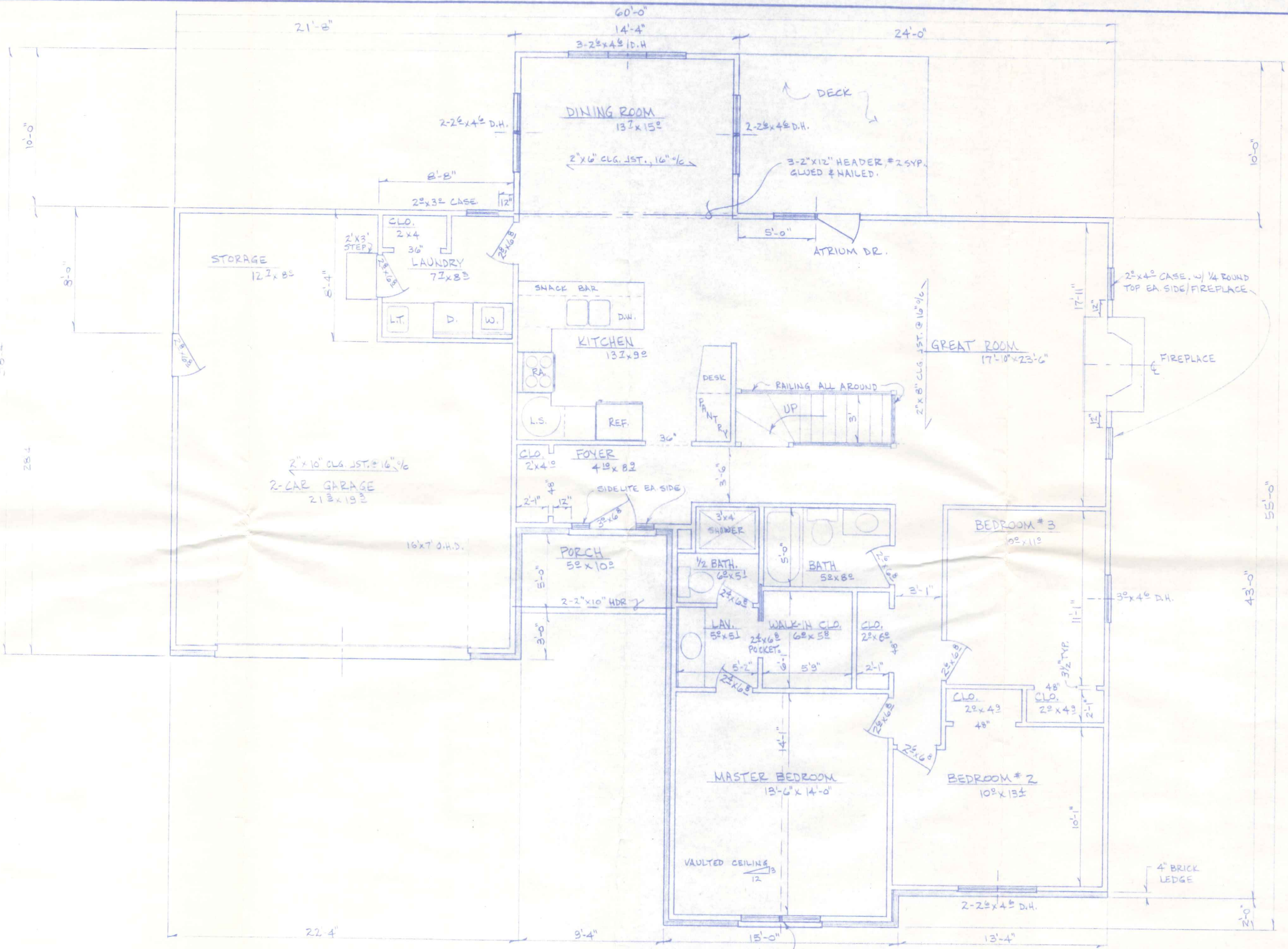


RIGHT SIDE ELEVATION  
1/8" = 1'-0"



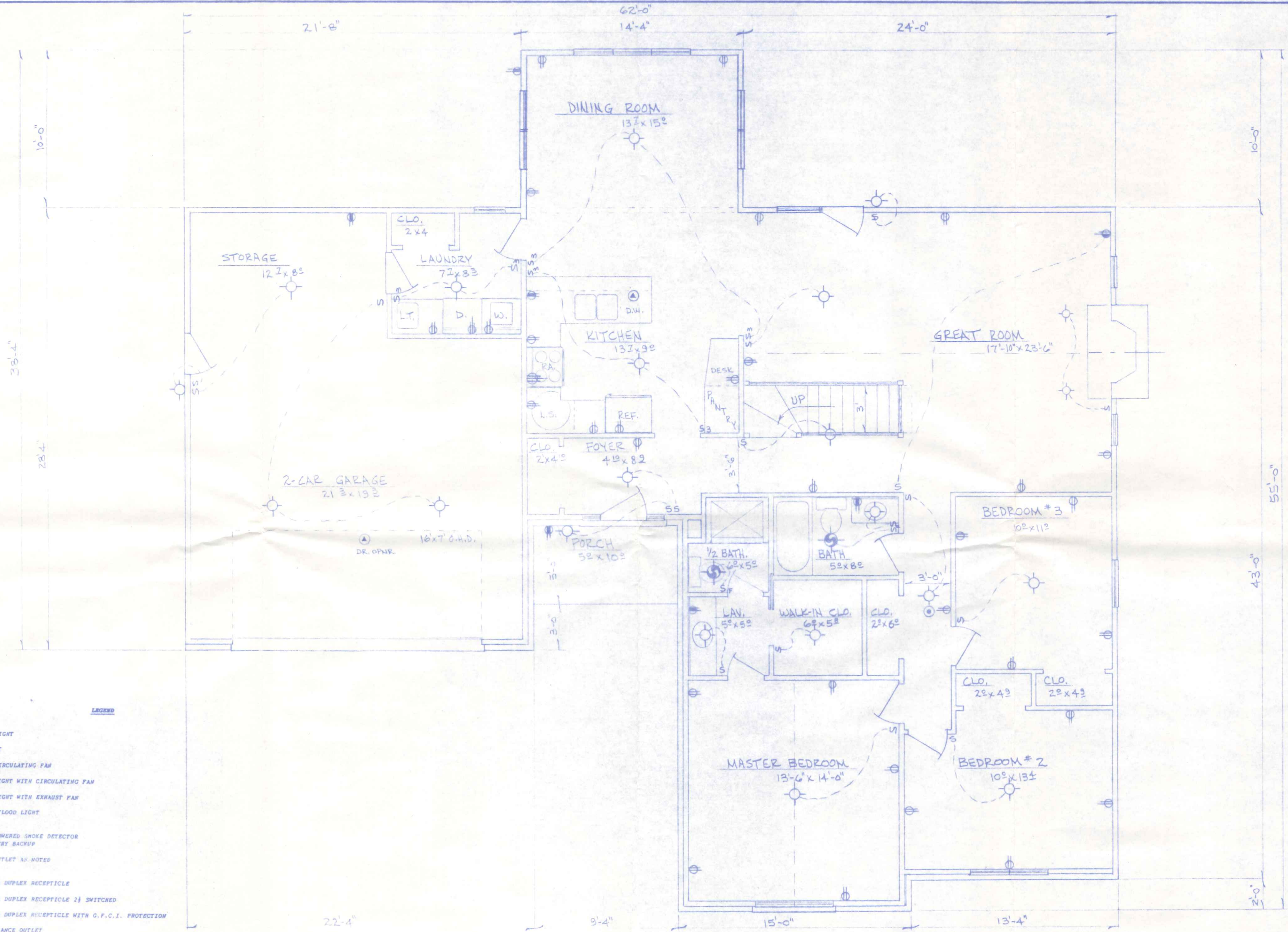
REAR ELEVATION  
1/8" = 1'-0"

BECK CONSTRUCTION CO. 590 Becklee NAPOLEON, OHIO		
CO. RD. 14 SCALE: NOTED DATE: JUNE, 1989	APPROVED BY:	DRAWN BY: R.D.S. REVISED NOV. 92
<b>EXTERIOR ELEVATIONS</b>		
PLAN NO. 238		DRAWING NUMBER 1 OF 5



1,667 # LIVING AREA (GROSS)  
 50 # PORCH  
 545 # GARAGE-STOR.  
 2,262 # TOTAL  
 922.5 # BASEMENT

<b>BECK CONSTRUCTION CO.</b> CO. RD. M., NAPOLEON, OHIO	
SCALE: 1/4" = 1'-0" DATE: JUNE, 1989	APPROVED BY: _____ DRAWN BY: R.D.S. REVISED NOV. 92
<b>FLOOR PLAN</b>	
PLAN NO. 238	DRAWING NUMBER <b>2 OF 5</b>

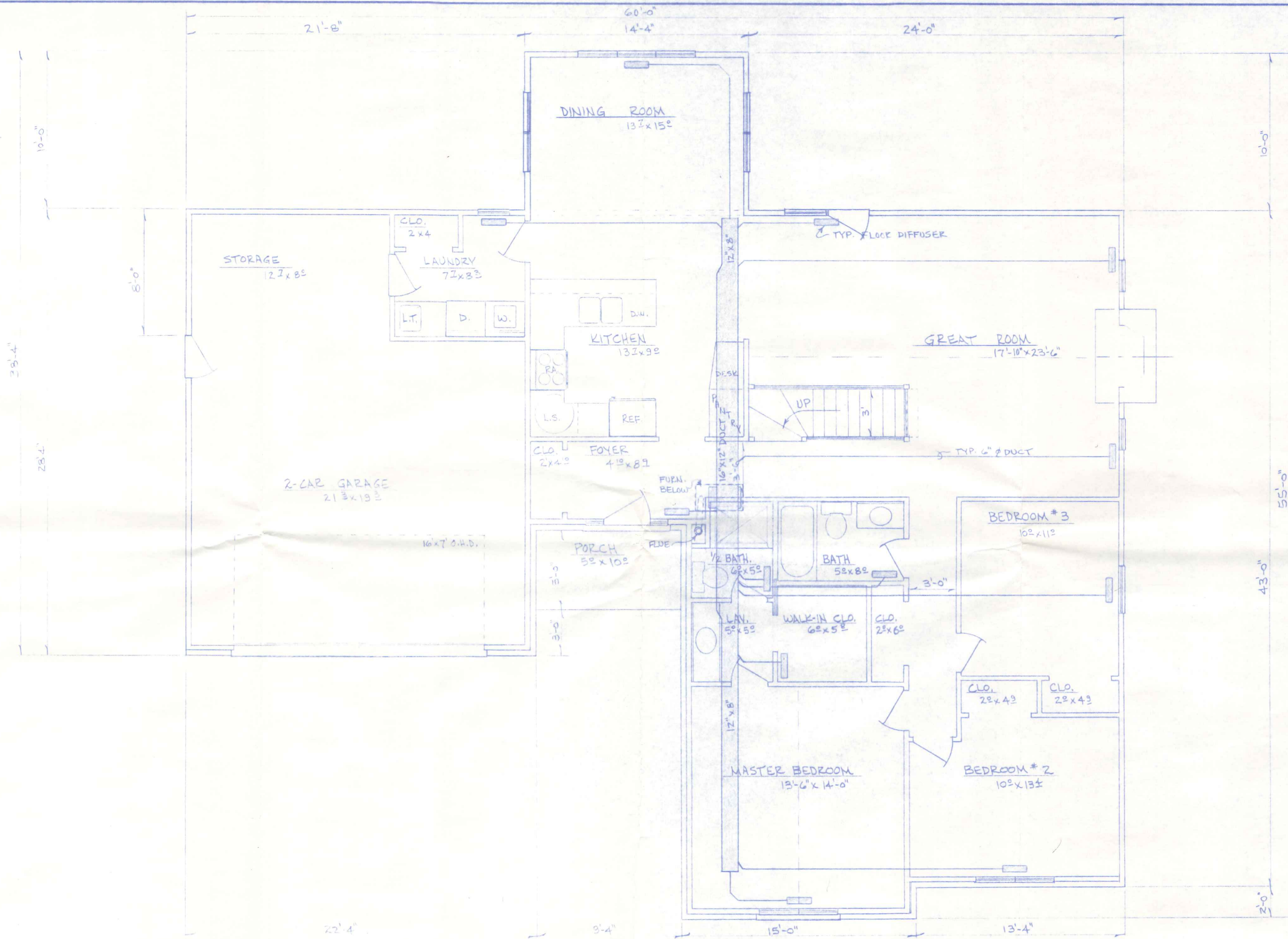


**LEGEND**

- ⊙ CEILING LIGHT
- ⊙ WALL LIGHT
- ⊙ CEILING CIRCULATING FAN
- ⊙ CEILING LIGHT WITH CIRCULATING FAN
- ⊙ CEILING LIGHT WITH EXHAUST FAN
- ⊙ EXTERIOR FLOOD LIGHT
- ⊙ PRIMARY POWERED SMOKE DETECTOR WITH BATTERY BACKUP
- ⊙ SPECIAL OUTLET AS NOTED
- ⊙ 120V - 20A DUPLEX RECEPTACLE
- ⊙ 120V - 20A DUPLEX RECEPTACLE 2) SWITCHED
- ⊙ 120V - 20A DUPLEX RECEPTACLE WITH G.F.C.I. PROTECTION
- ⊙ 240V APPLIANCE OUTLET
- ⊙ 120V - 20A LIGHT SWITCH
- ⊙ 120V - 20A FAN SWITCH
- ⊙ 120V - 20A 3 WAY LIGHT SWITCH

- NOTES**
- 1) See Foundation Plan for Basement Electrical
  - 2) Min. 20A. CIR., #12 Wire
  - 3) All Work and Material shall be as per National Electric Code

<b>BECK CONSTRUCTION CO.</b>	
CO. ED. M.	NAPOLEON, OHIO
SCALE: 1/4" = 1'-0"	APPROVED BY:
DATE: JUNE, 1989	DRAWN BY R.D.S.
<b>ELECTRICAL LAYOUT</b>	
PLAN NO. 238	DRAWING NUMBER <b>3 OF 5</b>



BECK CONSTRUCTION CO.	
CO. P.D. M.	NAPOLION, OH.
SCALE: 1/4" = 1'-0"	APPROVED BY:
DATE: JUNE, 1989	DRAWN BY R.D.S.
HEATING LAYOUT	
PLAN NO. 238	DRAWING NUMBER 4 OF 5

